

CONTINUING MEDICAL EDUCATION

Johns Hopkins School of Medicine
Division of Gastroenterology and Hepatology
Present



Tenth Annual HITEC Hopkins International Therapeutic Endoscopy Course 2026

October 1-2, 2026

REGISTER NOW

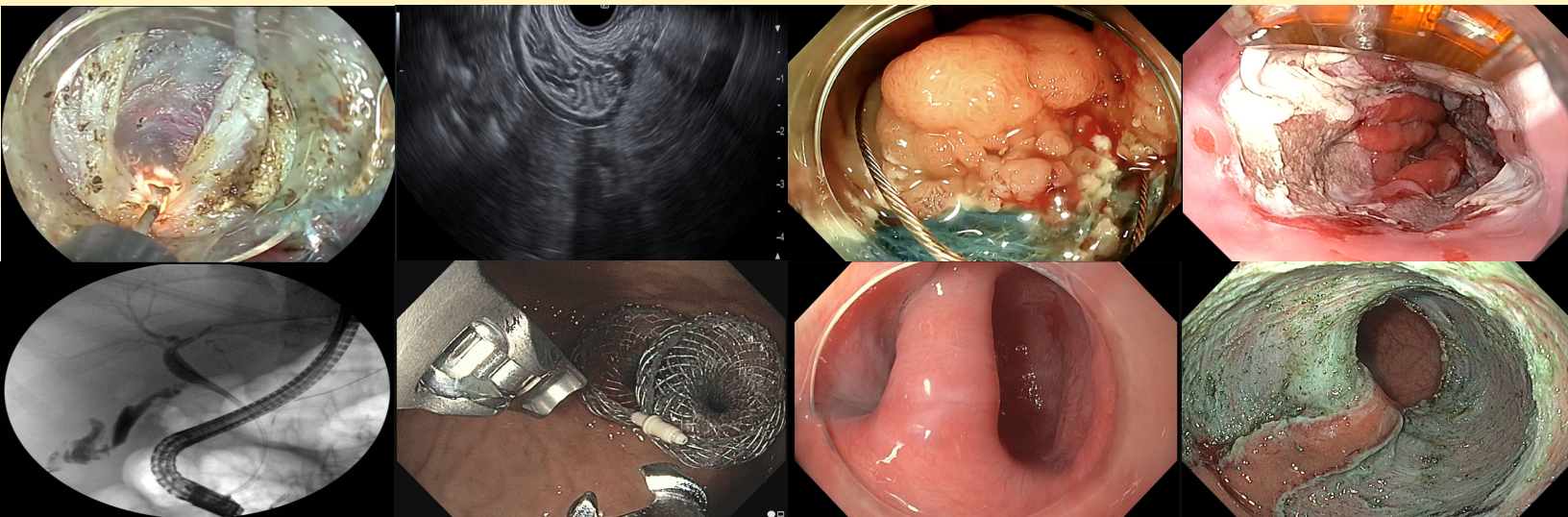
Johns Hopkins School of Medicine
Thomas B. Turner Building
Baltimore, Maryland, USA

Course Directors:

Mouen Khashab, MD, MASGE
Saowanee Ngamruengphong, MD
Mary-Rose Hess, BSN, RN, CGRN

With main conference lectures and live endoscopy sessions available via live stream!

This activity has been approved for AMA PRA Category 1 Credits™.



JOHNS HOPKINS
MEDICINE

- Comprehensive **2-day hybrid course** (in-person attendance with an option of virtual participation of lectures and live demonstrations) dedicated to providing practicing gastroenterologists, endoscopists and endoscopy staff state-of-the-art updates on luminal and pancreatico-biliary diseases and endoscopy.
- HITEC is the **third highest attended course in the U.S.** after DDW and ACG.
- **Hands-on Training** in advanced endoscopic procedures.
- The course is consistently attended by Physicians from more than 100 countries.
- Two days of **Live Endoscopy** from Johns Hopkins and other centers of excellence around the world with live **Spanish translation** and **AI Closed Caption [CC]** available in different languages.
- Free registration for world-wide audience (**additional fees apply when registering for in-person attendance**).
- Concurrent GI Nurses, Advanced Practice Provider and Fellow's Course.
- Course faculty includes the **best educators and leaders** around the world.
- Combination of live endoscopy, short didactic presentations, interactive discussions, and interactive video case presentations.

In short, **HITEC 2026** will feature a detailed illustration of the optimal techniques to enhance endoscopic skills for the management of various luminal and pancreatico-biliary diseases, and concurrently introducing advanced and novel procedures/techniques to trainees, fellows, endoscopy nurses and technicians from around the world. We look forward to your participation.



DESCRIPTION

The Tenth Annual Hopkins International Therapeutic Endoscopy Course (HITEC) is an intense two-day course dedicated to providing the practicing endoscopist state-of-the-art updates in luminal, pancreaticobiliary and bariatric endoscopy. In addition to extensive live endoscopy demonstrations and keynote lectures by renowned national and international faculty, our unique format will include faculty led industry symposia focusing on the numerous aspects of therapeutic endoscopy and medical management of various GI and pancreaticobiliary disease. This unique course, featuring global endoscopists, will ensure detailed and comprehensive illustration of optimal techniques to enhance endoscopic skills, while simultaneously introducing advanced and novel procedures/techniques to endoscopists.

WHO SHOULD ATTEND

This activity is intended for endoscopists, gastroenterologists, surgeons, gastroenterology/surgical fellows, endoscopy nurses, endoscopy technicians, physician assistants, nurse practitioners and nurses.

OBJECTIVES

After attending this activity, the learner will demonstrate the ability to:

- Discuss the latest advances in luminal and pancreaticobiliary endoscopy.
- Discuss the latest advances in bariatric endoscopy.
- Discuss different management option techniques for patients with complex colon polyps.
- Present an update on POEM and other treatment options for patients with achalasia.
- Illustrate techniques and indications for endoscopy suturing.
- Demonstrate latest breakthrough procedures in diagnostic and therapeutic endoscopy.

ACCREDITATION STATEMENT

The Johns Hopkins University School of Medicine is accredited by the Accreditation Council for Continuing Medical Education (ACCME) to provide continuing medical education for physicians.



CREDIT DESIGNATION STATEMENT

The Johns Hopkins University School of Medicine designates this live activity for a maximum of 12 AMA PRA Category 1 Credits™. Physicians should claim only the credit commensurate with the extent of their participation in the activity.

POLICY ON PRESENTER AND PROVIDER DISCLOSURE

It is the policy of the Johns Hopkins School of Medicine that the presenter and provider globally disclose conflicts of interest. The Johns Hopkins School of Medicine OCME has established policies in place to identify and mitigate relevant conflicts of interest prior to this educational activity. Detailed disclosure will be made prior to presentation of the education.

OTHER CREDITS

American Nurses Credentialing Center (ANCC) accepts AMA PRA Category 1 Credit™ from organizations accredited by the ACCME.

American Academy of Nurse Practitioners National Certification Program accepts AMA PRA Category 1 Credit™ from organizations accredited by the ACCME.

PA's may claim a maximum of 12 Category 1 credits for completing this activity. **NCCPA** accepts AMA PRA Category 1 Credit™ from organizations accredited by ACCME or a recognized state medical society.



MAINTENANCE OF CERTIFICATION

Successful completion of this CME activity, which includes participation in the evaluation component, enables the participant to earn up to 12 MOC points in the American Board of Internal Medicine's (ABIM) Maintenance of Certification (MOC) program. It is the CME activity provider's responsibility to submit participant completion information to ACCME for the purpose of granting ABIM MOC credit.



HOW TO OBTAIN CREDIT

Post activity, an online evaluation will be available to attendees to evaluate the activity and individual presentations and to identify future educational needs. Upon completion of the evaluation, the learner must attest to the number of hours in attendance. Credits earned will be added to the learner's transcript and immediately available for print. **The last day to access the evaluation and attest to your credits is November 16, 2026.**

An outcome survey will be sent to all physician attendees within two months post activity to assist us in determining what impact this activity had on the learner's practice.

AMERICANS WITH DISABILITIES ACT

The Johns Hopkins School of Medicine fully complies with the legal requirements of the ADA and the rules and regulations thereof. *Please notify us if you have any special needs.*

ACKNOWLEDGEMENT

Applications for commercial support from health care related industries are pending. A complete list of contributors will be provided in the syllabus. Please note that commercial support received is solely for the educational component of the activity and will not be used to provide food and beverage.

Please note: The Physician Payments Sunshine Act was enacted by Congress to increase public awareness of financial relationships between drug and medical device manufacturers and physicians. In compliance with the requirements of this Act, the commercial supporter/s of this activity may require the Johns Hopkins School of Medicine to report certain professional information (such as name, address, National Provider Identifier (NPI), and State License number) of physician attendees who receive complimentary food and beverage in conjunction with a CME activity. The commercial supporter is required to submit the collected data to the Centers for Medicare and Medicaid Services which will then publish the data on its website.



REGISTER ONLINE

<https://hopkinscme.cloud-cme.com/course/courseoverview?P=0&EID=67481>

ON-SITE REGISTRATION

Thursday, October 1, 2025 - 7:30 a.m. - 8:00 a.m.

Friday, October 2, 2025 - 6:50 a.m. - 7:30 a.m.

All attendees, including nurses and fellows, should plan to attend the course on Thursday and Friday. The sessions are geared towards each of these intended audiences and will take place in close proximity. The registration desk will be open all day.

The Turner Building is located on Rutland Avenue at Monument Street. Directions and campus parking information are available on our website under the Contact Us tab at <https://HopkinsCME.cloud-cme.com>. Handicapped parking is available in the nearby Rutland Garage. Johns Hopkins is smoke-free.

HOTEL AND TRAVEL INFORMATION

Residence Inn Baltimore at the Johns Hopkins Medical Campus

Phone: +1 (443) 524-8400

800 North Wolfe Street, Baltimore, Maryland 21205

Website: www.marriott.com Click [here](#) to book!

Hotel Reservation Cut-Off Date: September 9, 2026

The Residence Inn Baltimore is located on the Johns Hopkins Medical Campus. Make your reservation online or by calling the hotel directly and specify that you are attending the Johns Hopkins **HITEC** Conference to receive the special group rate of \$169 for one bedroom king suite, plus tax. On-site valet parking is available at the hotel at an additional charge. Check-in time is 4:00 p.m. Check-out time is 12:00 p.m. This hotel is located directly across the street to the meeting site, within walking distance.

TRAVEL INFORMATION

By Air: Baltimore is served by three major airports: Baltimore/Washington International Airport (BWI) in Maryland; Washington Dulles International Airport (IAD) and Ronald Reagan National Airport (DCA) in Northern Virginia.

Taxi Service: To downtown Baltimore from BWI, the nearest airport, is 15-30 minutes depending on traffic and approximately \$50 one way. Super Shuttle charges less than \$20 one way and reservations are needed.

Reservations can be made online at: www.supershuttle.com or call +1 (410) 859-3427.

By Rail: Baltimore is easily accessible by train. Amtrak trains run 24 hours a day, 7 days a week. Baltimore is a major stop for Amtrak's high-speed Acela Express service. Penn Station is easily accessible by I-95, I-83 and I-70 and is a 15 minute taxi ride to Johns Hopkins. For more information visit www.amtrak.com or call +1 (800) USA-RAIL.

Ground Transportation

You can request a ride on any day and at any time with Uber or Lyft in Baltimore.

LOCATION

Thomas B. Turner Building

Johns Hopkins School of Medicine

720 Rutland Avenue, Ground Floor

Baltimore, Maryland 21205



SYLLABUS

The syllabus will be accessible online and via your mobile device in the CloudCME App prior to the activity. An email reminder will be sent.

VIRTUAL LEARNERS

Lectures and live endoscopy sessions will be accessible via Zoom. The Zoom webinar link will be accessible online and via your mobile device in the CloudCME App one week prior to the activity startdate. An email reminder will be sent. To access, please visit our website: CME Website: <https://hopkinscme.cloud-cme.com> (Sign In, Click My CME tab, Click Syllabus)

FEES

Registration Cut-Off Date: **September 25, 2026 5:00 p.m. EST**

	Before August 1, 2026	After August 1, 2026
IN-PERSON ATTENDEE (Thursday and Friday)		
Physician: In-Person Course Only	\$250	\$300
Physician: In-Person Course with Hands-On	\$400	\$450
Physician-in-Training: In-Person Course Only	\$100	\$150
Advanced Practice Provider (NP/PA): In-Person Course Only	\$100	\$150
Nursing Track (RN): In-Person Course with Hands-On	\$100	\$150
Fellows Track: In-Person Course with Hands-On	accepted applicants must apply via email: hitecfellowscourse@ gmail.com	accepted applicants must apply via email: hitecfellowscourse@ gmail.com
Industry Partners	\$200	\$250
VIRTUAL ATTENDEE (Thursday and Friday)		
VIRTUAL ATTENDEE (Lectures & Live Endoscopy)	FREE	FREE

Methods of Payment: Learners must register and submit full payment prior to the start of the activity. On-site payments can only be accepted if made by learners via credit card through the online portal by 5:00 p.m. ET on the first day of the activity. The registration fee includes instructional materials, continental breakfasts, refreshment breaks and lunches.

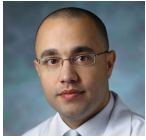
You will receive a confirmation by e-mail. If you have not received it by **September 25, 2026**, call (410) 502-9636 to confirm that you are registered. A transcript of attendance will be available upon attestation of your credit hours and submission of the post activity online evaluation.

The Johns Hopkins University reserves the right to cancel or postpone any activity due to unforeseen circumstances. In this event, the University will refund the registration fee but is not responsible for travel expenses. Additionally, we reserve the right to change the venue to a comparable venue. Under such circumstances registrants will be notified as soon as possible.

LATE FEE AND REFUND POLICY

A \$50 late fee applies to registrations received after 5:00 p.m. ET on **September 25, 2026**. A handling fee of \$50 will be deducted for cancellation. An additional fee may apply for cancellation of other events, including workshops and social activities. Refund requests must be received by fax or mail by **September 25, 2026**. No refunds will be made thereafter. Transfer of registration to another Johns Hopkins activity in lieu of cancellation is not possible.





Mouen Khashab, MD, MASGE
 Professor of Medicine
 Director, Therapeutic Endoscopy
 The Johns Hopkins Hospital
 Lead, Therapeutic Endoscopy
 Group The Johns Hopkins
 Enterprise Division of
 Gastroenterology and Hepatology
 Johns Hopkins University School of
 Medicine
 Baltimore, Maryland



Saowanee Ngamruengphong, MD
 Associate Professor of Medicine
 Associate Director, Gastroenterology
 and Hepatology Fellowship
 Division of Gastroenterology and
 Hepatology
 Johns Hopkins University School of
 Medicine
 Baltimore, Maryland



Mary-Rose Hess, BSN, RN, CGRN
 Endoscopy Nurse Manager
 Advanced Therapeutic Nurse
 The Johns Hopkins Hospital
 Baltimore, Maryland

JOHNS HOPKINS FACULTY



Venkata Akshintala, MD
 Associate Professor of Medicine
 Program Director, Medical Pancreatology
 Program Director, Therapeutic Endoscopy
 Fellowship



Anthony Kalloo, MD
 Professor of Medicine



Marcia Canto, MD, MHS
 Professor of Medicine and Oncology
 Director, Clinical Research and Heartburn
 Center



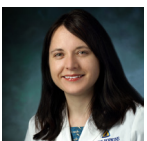
Zahra Maleki, MD, FCAP, MIAC
 Associate Professor of Pathology



Olaya Brewer Gutierrez, MBBS
 Associate Professor of Clinical Medicine
 Clinical Director, Division of Gastroenterology
 and Hepatology
 Chair, Gastroenterology Subsection
 Director of Endoscopy
 Sibley Memorial Hospital



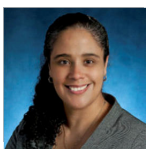
Lynette Mark, MD
 Professor of Medicine and Otolaryngology -
 Head and Neck Surgery
 Division of Anesthesiology and Critical
 Care Medicine



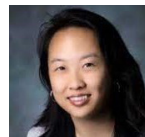
Margaret Geri Keane, MBBS, MSc
 Assistant Professor of Medicine



Katherine Norgaard, MD
 Assistant Professor of Medicine
 Division of Anesthesiology and Critical
 Care Medicine



Christy Gray, MD, PhD
 Assistant Professor of Medicine
 Division of Anesthesiology and Critical
 Care Medicine



Eun Ji Shin, MD, PhD
 Associate Professor of Medicine



Vikesh Singh, MD, MSc
 Professor of Medicine
 Director of Endoscopy
 Director of Pancreatology





Gerard Aguila, RN, BSN (Israel)
Endoscopy Nurse
Emek Medical Center
Afula, Israel



Amol Bapaye, MD, (MS), FASGE, FIGES, FSIGE (India)
Gastroenterologist and Interventional Endoscopist
Chief, Shivan and Desai Center for
Digestive Disorders
Deenanath Mangeshkar Hospital
and Research Center
Pune, India



Harjot Bedi, MD, MHSc, MSc (Canada)
Assistant Professor
Division of Gastroenterology and Hepatology
St. Paul's Hospital and
University of British Columbia
Vancouver, BC, Canada



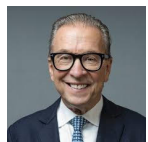
Christopher Chapman, MD (USA)
Interventional Gastroenterologist
Center for Interventional and Therapeutic
Endoscopy (CITE)
Rush University Medical Center
Chicago, Illinois



Yen-I Chen, MD, MSc (Canada)
Director of Therapeutic Endoscopy
McGill University Health Centre
Montreal, QC, Canada



Nastazja Dagny Pilonis, MD, PhD (Poland)
Department of Oncological Gastroenterology
National Research Institute of Oncology
Medical Center for Postgraduate Education
Warsaw, Poland



Gregory Haber, MD, MASGE (USA)
Professor of Medicine
Chief of Endoscopy
Director, Center for Advanced Therapeutics
and Innovation
Division of Gastroenterology
Department of Medicine
NYU Langone Health
New York, New York



Muhammad Hasan, MD (USA)
Professor of Medicine
University of Central Florida
Medical Director, Center for Interventional
Endoscopy at AdventHealth
Orlando, Florida



Kambiz Kadkhodayan, MD (USA)
Program Director, Advanced Endoscopy Fellowship
Center for Interventional Endoscopy at AdventHealth
Orlando, Florida



Michal Kaminski, MD, PhD (Poland)
Department of Oncological Gastroenterology
National Research Institute of Oncology
Medical Center for Postgraduate Education
Warsaw, Poland



Srinadh Komanduri, MD, MS (USA)
Professor of Medicine
Associate Chief, Gastroenterology and Hepatology
Director of Endoscopy
Northwestern Medicine
Chicago, Illinois



Vivek Kumbhari, MBChB, PhD (USA)
Professor of Medicine
Chair, Gastroenterology and Hepatology
Mayo Clinic
Jacksonville, Florida



Ryan Law, DO (USA)
Professor of Medicine
Director of Endoscopy Operations
Division of Gastroenterology and Hepatology
Mayo Clinic
Rochester, Minnesota



Amit Maydeo, MD (India)
Chairman
Institute of Gastrosciences
Sir HN Reliance Foundation Hospital
Emeritus Professor, Department of Surgery
Seth GS Medical College
Mumbai, India



Bogdan Miutescu, MD, PhD (Romania)
Assistant Professor
Gastroenterology and Hepatology Division
University of Medicine and Pharmacy
"Victor Babes"
Timisoara, Romania



Horst Neuhaus, MD, PhD (Germany)
Professor of Medicine
Technical University Munich
Consultant Gastroenterologist and Interventional
Endoscopist
Interdisciplinary Clinic
Düsseldorf, Germany





Alessandro Repici, MD (Italy)
Professor of Gastroenterology
Director of Endoscopy
Humanitas Research Hospital and
Humanitas University
Milan, Italy



Uzma D. Siddiqui, MD (USA)
Professor of Medicine
Director, Center for Endoscopic Research and
Therapeutics (CERT)
University of Chicago
Chicago, Illinois



Rungsun Rerknimitr, MD, FRCP, FASGE (Thailand)
Professor of Medicine
Director, Center of Excellence for Innovation
and Endoscopy in Gastrointestinal Oncology
Director of Chula-Medical Innovation and
Entrepreneurship (CMICE)
Faculty of Medicine Chulalongkorn University
Bangkok, Thailand



Shyam Thakkar, MD (USA)
Professor of Medicine
Director of Advanced Therapeutic Endoscopy
West Virginia University Medicine
Morgantown, West Virginia



Doug Rex, MD, MASGE (USA)
Distinguished Professor Emeritus of Medicine
Indiana University School of Medicine
Indianapolis, Indiana



**Christopher Thompson, MD, MSc, FACG,
FASGE, AGAF (USA)**
Professor of Medicine
Director of Endoscopy
Brigham and Women's Hospital
Harvard Medical School
Boston, Massachusetts



Jason Samarasena, MD, MBA, FACG, AGAF (USA)
Chief, Division of Gastroenterology
and Hepatology
Professor of Medicine
Interventional Endoscopy Training Director
H. H. Chao Digestive Health Institute
University of California
Irvine, California



Linda Zhang, MSSB (Australia)
Staff Specialist
Division of Gastroenterology and Hepatology
St. George Hospital
Sydney, Australia



Reem Z. Sharaiha, MD, MSc (USA)
Professor of Medicine
Division of Gastroenterology and Hepatology Chief
of Endoscopy
Weill Cornell Medicine
New York, New York



MAIN COURSE

7:30 8:00 **Registration and Breakfast**

8:00 8:10 **Welcome, Introduction and Conference Goals**
Mouen Khashab, MD

8:10 8:35 **Symposium # 1: TBD**

This session is not eligible for AMA PRA Category I Credit™. Sponsored by TBD.

8:35 9:00 **Symposium # 2: TBD**

This session is not eligible for AMA PRA Category I Credit™. Sponsored by TBD.

9:00 –10:45 **Live Endoscopy Session I**

- Room 1: Shivanand Desai Center | Pune, India
Amol Bapaye, MD
- Room 2: Shivanand Desai Center | Pune, India
Amol Bapaye, MD
- Room 3: Advent Health | Orlando, Florida
Muhammad Hasan, MD
- Room 4: Advent Health | Orlando, Florida
Kambiz Kadkhodayan, MD

10:45 11:10 **Coffee Break and Visit Exhibits**

11:10 11:35 **Symposium # 3: TBD**

This session is not eligible for AMA PRA Category I Credit™. Sponsored by TBD.

11:35 12:00 **Symposium # 4: TBD**

This session is not eligible for AMA PRA Category I Credit™. Sponsored by TBD.

12:00 1:00 **Lunch and Visit Exhibits**

12:15 12:40 **Symposium # 5: TBD**

This session is not eligible for AMA PRA Category I Credit™. Sponsored by TBD.



1:00 5:00 HANDS-ON SESSION MAIN COURSE

Station # 1: ESD 1

(Faculty trainers: Repici, Ngam)

Station # 2: ESD 2

(Faculty trainers: Neuhaus, Ngam)

Station # 3: POEM 1

(Faculty trainers: Siddiqui, Brewer, Khashab)

Station # 4: POEM 2

(Faculty trainers: Thakkar, Brewer, Khashab)

Station # 5: Defect Closure and Suturing 1

(Faculty trainers: Sharaiha, Keane)

Station # 6: Defect Closure and Suturing 2

(Faculty trainers: Thompson, Keane)

Station # 7: EMR and Hemostasis

(Faculty trainers: Komanduri, Shin)

Station # 8: Stenting

(Faculty trainers: Maydeo, Akshintala)

Station # 9: Interventional EUS

(Faculty trainers: Miutescu, Akshintala)

Station # 10: New Technology

3:00 3:15 **Break**

1:00 5:00 FELLOWS COURSE WITH HANDS-ON SESSION

This session is not eligible for AMA PRA Category I Credits™

3:00 3:25 **Break** [Visit station #10]

See next page 11 for complete Fellows Track afternoon agenda.

1:00 5:00 NURSING TRACK COURSE WITH HANDS-ON SESSION

2:45 2:55 **Break** [Visit station #10]

See page 12 for complete Nursing Track afternoon agenda.

5:00 – 6:00 SOCIAL HOUR

Optional Cocktail Hour to Meet and Greet the HITEC Faculty Team.
Hors d'oeuvres and drinks will be served.

See Next Pages for full Fellows Track agenda, Nursing Track agenda, and Page 13 for (Friday's) Agenda.



FELLOWS COURSE*All program times listed are in Eastern Standard Time (EST).***HITEC**
2026**Harjot Bedi, MD, MHS, MSc***Fellows Course Director*

Assistant Professor

Division of Gastroenterology and Hepatology

St. Paul's Hospital and

University of British Columbia

Vancouver, BC, Canada

Limited Course - Pre-application required. 25 spots available. 5 Trainees per station; 40 minutes at each station.

Attendance required both days of the course with this separate hands-on training included.

FELLOWS COURSE: AFTERNOON SESSION*This session is not eligible for AMA PRA Category I Credits™.*1:00 - 1:05 Welcome, Introduction and Conference Goals
Harjot Bedi, MD1:00 - 3:00 Hands-On Stations
Station #1: EMR and Hemostasis
(Faculty trainers: Zhang, Shin)Station # 2: ESD
(Faculty trainers: Haber, Ngam)Station #3: Defect Closure and Suturing
(Faculty trainers: Kumbhari, Keane)

3:00 - 3:25 Break [Visit station #10]

3:25 - 3:40 Symposium # 6: TBD

This session is not eligible for AMA PRA Category I Credit™.
Sponsored by TBD.3:40 - 5:00 Hands-on Stations
Station # 4: Interventional EUS
(Faculty trainer: Chen)Station # 5: Luminal Stenting
(Faculty trainers: Chapman, Bedi)5:00 - 6:00 SOCIAL HOUR
Optional Cocktail Hour to Meet and Greet the HITEC Faculty Team.
Hors d'oeuvres and drinks will be served.

See Page 13 for Friday's agenda.



ADVANCED THERAPEUTIC NURSING TRACK

All program times listed are in Eastern Standard Time (EST).

NURSING TRACK: AFTERNOON SESSION

Session I

- 1:00 1:05 **Welcome, Introduction and Conference Goals**
- 1:05 1:25 **Streamlining Your Practice: Safely Integrating New Products, Procedures and Workflows**
- 1:25 1:45 **POEM – The Different Versions of Per Oral Endoscopic Myotomy**
- 1:45 2:05 **Current Treatment Options for Barrett's Esophagus**
- 2:05 2:25 **ERCP for Patients with Altered Upper GI Anatomy**
- 2:25 2:45 **Endoscopic Removal of Lesions by ESD, EFTR, and STER**
- 2:45 2:55 **Refreshment Break**

Session II

HANDS-ON STATIONS

- 2:55 – 3:00 **Station Introductions**
- 3:00 – 3:30 **Station 1: Endoscopic Suturing**
- 3:30 – 4:00 **Station 2: Stop the Bleed**
- 4:00 – 4:30 **Station 3: Hybrid Argon Plasma Coagulation**
- 4:30 5:00 **Station 4: Name that Stent**
- 5:00 5:10 **Question and Answer Session**
- 5:00 6:00 **SOCIAL HOUR**
Optional Cocktail Hour to Meet and Greet the HITEC Faculty Team. Hors d'oeuvres and drinks will be served.

See Page 13 for Friday's agenda.



PROGRAM

All program times listed are in Eastern Standard Time (EST).

HITEC
2026**MAIN COURSE**6:50 7:30 **Registration, Breakfast and Visit Exhibits**12:50 1:10 **Symposium # 11: TBD**7:20 – 7:30 **Welcome, Introduction and Conference Goals**
Mouen Khashab, MD*This session is not eligible for AMA PRA Category 1 Credit™. Sponsored by TBD.*7:30 7:50 **Symposium # 7: TBD***This session is not eligible for AMA PRA Category 1 Credit™. Sponsored by TBD.*1:10 1:30 **Break and Visit Exhibits**7:50 8:10 **Symposium # 8: TBD***This session is not eligible for AMA PRA Category 1 Credit™. Sponsored by TBD.*1:30 3:00 **Live Endoscopy Session III**8:10 9:40 **Live Endoscopy Session I**

- **Room 1: The Johns Hopkins Hospital**
Mouen Khashab, MD
- **Room 2: The Johns Hopkins Hospital**
Alessandro Repici, MD
- **Room 3: Chulalongkorn University | Bangkok, Thailand**
Rungsun Rerknimitr, MD
- **Room 4: Warsaw Live**
Michal Kaminski, MD, PhD

3:00 3:30 **Break and Visit Exhibits**9:40 –10:10 **Break and Visit Exhibits**10:10 –10:30 **Symposium # 9: TBD***This session is not eligible for AMA PRA Category 1 Credit™. Sponsored by TBD.*3:30 5:00 **Live Endoscopy Session IV**

- **Room 1: The Johns Hopkins Hospital**
Amit Maydeo, MD and Eun Ji Shin, MD, PhD
- **Room 2: The Johns Hopkins Hospital**
Horst Neuhaus, MD, PhD
- **Room 3: The Johns Hopkins Hospital**
Margaret Geri Keane, MBBS, MSc and Olaya Brewer Gutierrez, MBBS
- **Room 4: University of California, Irvine**
Jason Samarasena, MD, MBA, FACG, AGAF

10:30 –12:00 **Live Endoscopy Session II**

- **Room 1: The Johns Hopkins Hospital**
Horst Neuhaus, MD, PhD
- **Room 2: The Johns Hopkins Hospital**
Saowanee Ngamruenphong, MD
- **Room 3: The Johns Hopkins Hospital**
Marcia Canto, MD, MHS
- **Room 4: Warsaw Live**
Nastazja Dagny Pilonis, MD, MPH

5:00 5:05 **Closing Remarks**
Mouen Khashab, MD and
Saowanee Ngamruenphong, MD12:00 1:30 **Lunch and Visit Exhibits**12:30 –12:50 **Symposium # 10: TBD***This session is not eligible for AMA PRA Category 1 Credit™. Sponsored by TBD.***Adjourn**

You will receive an email notification to complete the evaluation form and to attest to the number of hours in attendance.

The registration desk will remain open during conference hours.





TO REGISTER OR FOR FURTHER INFORMATION

Register online: <https://hopkinscme.cloud-cme.com/course/courseoverview?P=0&EID=67481>

Register by Phone(410) 502-9636
Register by Fax.....(866) 510-7088
Confirmation/Certificates/Transcripts.....(410) 502-9636
General Information.....(410) 955-2959
E-mail the Office of CME cmenet@jhmi.edu

Follow us on X: [X/HopkinsCME](https://twitter.com/HopkinsCME)
Facebook: facebook.com/HopkinsCME

For general information, please visit the activity webpage at <https://hopkinscme.cloud-cme.com/course/courseoverview?P=0&EID=67481>



Check out our mobile app CloudCME.
Organization Code: **HopkinsCME**

For technical assistance with website, CloudCME or credits,
please visit our tech support help page:
<https://hopkinscme.cloud-cme.com/about/help>

